



Part Number : [936015032](#)

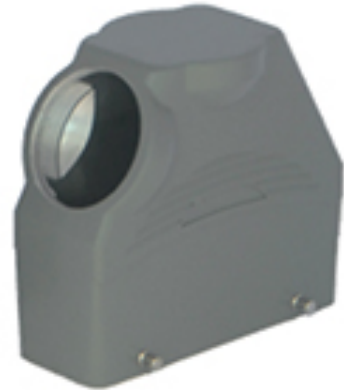
Product Description : GWconnect STD - Standard, Double Lever Hood, Die-cast Aluminum, with 4 Pegs, 30° Side Entry, Size 24B «104x27», M40 Thread, High Construction, Grey

Series Number : 93601

Status : Active

Product Category : Heavy-Duty Connectors

Engineering Number : 7824.6844.5



Product Environment Compliance

Compliance

China RoHS	Not Reviewed
EU ELV	Not Reviewed
Low-Halogen Status	Not Reviewed
REACH SVHC	Not Reviewed
EU RoHS	Not Reviewed

Multiple Part Product Compliance Statements

- Eu RoHS
- REACH SVHC
- Low-Halogen

Multiple Part Industry Compliance Documents

- IPC 1752A Class C
- IPC 1752A Class D
- Molex Product Compliance Declaration
- IEC-62474
- chemSHERPA (xml)

EU RoHS Certificate of Compliance

Part Details

General

Status	Active
Category	Heavy-Duty Connectors

Series	93601
Description	GWconnect STD - Standard, Double Lever Hood, Die-cast Aluminum, with 4 Pegs, 30° Side Entry, Size 24B «104x27», M40 Thread, High Construction, Grey
Component Type	Double Lever Hood
IP Rating	IP66
Product Name	GWconnect
Standard	ANSI/UL 50, ANSI/UL 50 E, CSA C22.2 No.94-1-2, EN 61984
Type	STD
UPC	889056267205

Electrical

Voltage - Maximum	500V
-------------------	------

Physical

Component Size	24B «104X27»
Entry Location	Side
Hood Coating	Polyester Powder
Hood Color	GREY RAL 7037
Lock to Mating Part	Yes
Material - Hood	Die-cast Aluminum
Material - Peg	Stainless Steel
Number of Pegs	4
Packaging Type	Bag
Thread Size	M40
Thread Type	(M) Metric

Use with Part(s)

Description	Part Number
Use With	Size 24B «104x27» S-D, S-DD, S-E, S-EE, S-EP, S-ES, S-HSB, S-K, and S-M Inserts

This document was generated on Mar 27, 2025