



Part Number : [1210120126](#)

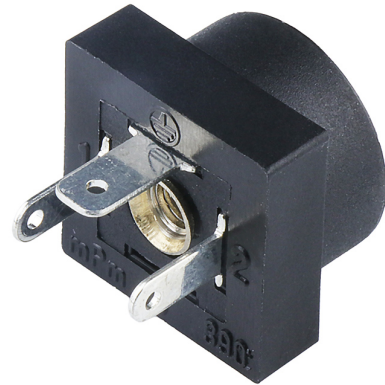
Product Description : mPm DIN Base, Form B-11mm, B39 Base, 2 Pole Plus Ground Terminal, 250V AC/300V DC, Black, Nitrile Gasket with Screws

Series Number : 121012

Status : Active

Product Category : Circular Industrial Connectors

Engineering Number : B392000N0



Documents & Resources

Drawings


[1210120126_sd.pdf](#)

Specifications

[PK-121012-B39-001.pdf](#)

Product Environment Compliance

Compliance

GADSL/IMDS	Not Relevant
China RoHS	
EU ELV	Not Relevant
Low-Halogen Status	Low-Halogen per IEC 61249-2-21
REACH SVHC	Contains Lead per D(2024)7663-DC (21 Jan 2025)
EU RoHS	Compliant with Exemption 6(c) per EU 2015/863

Multiple Part Product Compliance Statements

- Eu RoHS
- REACH SVHC
- Low-Halogen

Multiple Part Industry Compliance Documents

- IPC 1752A Class C

- IPC 1752A Class D
- Molex Product Compliance Declaration
- IEC-62474
- chemSHERPA (xml)

EU RoHS Certificate of Compliance

Part Details

General

Status	Active
Category	Circular Industrial Connectors
Series	121012
Description	mPm DIN Base, Form B-11mm, B39 Base, 2 Pole Plus Ground Terminal, 250V AC/300V DC, Black, Nitrile Gasket with Screws
IP Rating	IP65, IP67
Product Name	mPm
Type	Field Attachable Connector
UPC	883906361082

Electrical

Current - Maximum per Contact	10.0A
Voltage - Maximum	250V AC / 300V DC

Physical

Cable Diameter	N/A
Coupling Type	N/A
Diagnostics / LEDs	No
Diagnostics Port	No
Form	B - 11mm
Gender	N/A
Keyway	None
Material - Connector Body	Polypropylene
Material - Contact	Brass
Material - Coupling Nut	N/A
Material - Plating Mating	Tin

Net Weight	2.592/g
Orientation	Straight
Pitch - Mating Interface	11.00mm
Poles	2
Temperature Range - Operating	-40°C to +90°C
Wire Size (AWG)	N/A

This document was generated on Mar 27, 2025